

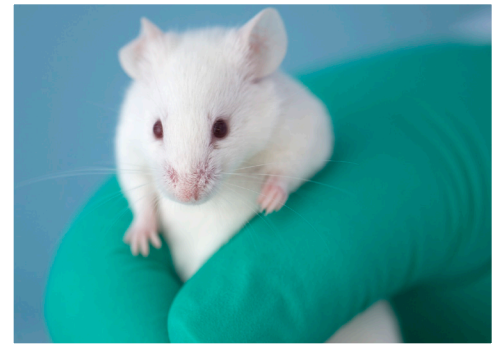
MFS

A High-Precision, Diaphragm Pump Mass Flow System



The MFS Mass Flow System

The MFS mass flow system unites a pump, needle valve and linearized mass flow meter into an easy to use unit with the accuracy required for high precision respirometry. Its individual gas ports can be used alone or in any combination, making it ideal for generating flows rates for animals from insect to small mammals.



Individual Flow Ports

The MFS separates the flow generation from the flow meter and needle valve allowing use of individual components for flow metering when flow generation is not required.

Digital, 2-line alphanumeric display

The MFS has a display and control knobs that allow the user to calibrate and change multiple settings at the instrument. Both flow setpoint and actual flow are displayed during operation.

Three year warranty

Sable Systems instruments are warranted to be free of defects in material or workmanship for a period of three (3) years from date of purchase. See website for warranty policy.

Lifetime Technical Support

Our technical support team will help you overcome any challenges you may face with equipment setup as well as provide advice and assistance on future applications.

Specifications:

Pump Type: Diaphragm, with brushless DC motor

Range: 75-4,000mL/min

Accuracy: 2% of reading or 10mL/min (whichever is greater)

Resolution: 1mL/min

Weight: 6.5lbs/3kg (8lbs/4kg with packaging)

Dimensions: W: 8in/21cm, H: 6in/15cm, D: 14in/36cm

Power Requirements: 12-15 VDC nominal, 20-800mA consumption; universal AC adapter supplied

Flow Rate: MFS-2: 75-2,000mL/min, MFS-5: 100-4,000ml/

min **Analog Outputs:** Multiple range 0-5V BNC for flow rate

Digital Outputs: RS-232 (serial)

Operating Conditions: 0-50 °C, non-condensing

Optional Configurations:

Connectors: A variety of external gas connectors and fittings are available to meet your needs. Call for more information.

Flow Rate Selection: Two different flow rates are available with the MFS flow systems. The lower flow rate MFS-2 with a flow of 10-1750mL/min and the higher flow rate MFS-5 with a flow of 50-3500mL/min.

Contact Sable Systems.

We encourage you to discuss your application with us.

Phone: 800-330-0465 (toll-free) / 702-269-4445

Fax: 702-269-4446.

On the Web: www.sablesys.com

Email Us: sales@sablesys.com.